

# Nantucket® Collection Expansion



LIFE | GOES THROUGH IT™

## EXPANDING ON A TRADITION OF BEAUTY AND DURABILITY

### Unbeatable Construction

- Mortise-and-tenon joinery with face-driven pins
- Two-piece laminated stile-and-rail construction
- Divided lite doors made with SDL construction
- Design pressure ratings of DP50 (additional hardware may be required in some applications)

### Wood Species Options

- Available in Douglas Fir, Sapele Mahogany, Nootka Cypress and Black Locust
- Tenon and face pins always made of Black Locust

### Design Options

- Thickness - 1¾" or 2¼"
- Sticking Profiles - Shaker or Ovolo
- Panel Options - 1⅞" Innerbond® double hip-raised or ¾" solid flat

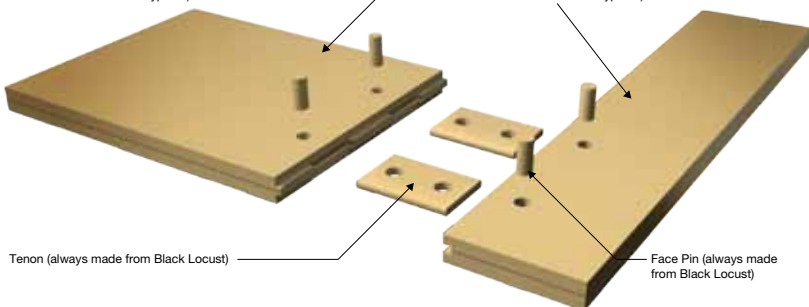
### Nantucket Collection Extended Warranty

- 10-year warranty on doors made from Sapele Mahogany, Nootka Cypress and Black Locust
- 5-year warranty on doors made from Douglas Fir
- No building overhang required, refer to "High Exposure" finishing recommendations for best performance

## A BETTER DOOR FOR ANY CLIMATE

Mortised Rail (available in Douglas Fir, Sapele Mahogany, Black Locust or Nootka Cypress)

Mortised Stile (available in Douglas Fir, Sapele Mahogany, Black Locust or Nootka Cypress)



Tenon (always made from Black Locust)

Face Pin (always made from Black Locust)



Most Innovative  
DOOR OF THE YEAR

## AVAILABLE WOOD SPECIES



Douglas Fir



Sapele Mahogany



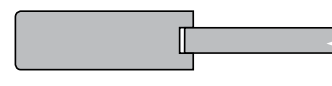
Nootka Cypress



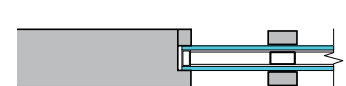
Black Locust

## PROFILE OPTIONS

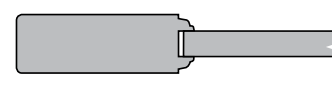
Shaker with ¾" Flat Panel



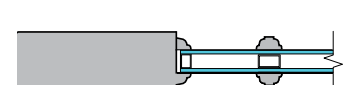
Shaker SDL Construction



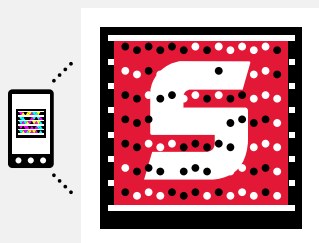
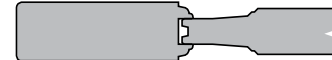
Ovolo with ¾" Flat Panel



Ovolo SDL Construction



Ovolo with 1⅞" Innerbond®  
Double Hip-Raised Panel



Learn more about Simpson products using your smartphone.

Get the free mobile app at <http://gettag.mobi>

**Simpson®**  
Door Company

1.800.SIMPSON | [simpsondoor.com](http://simpsondoor.com)